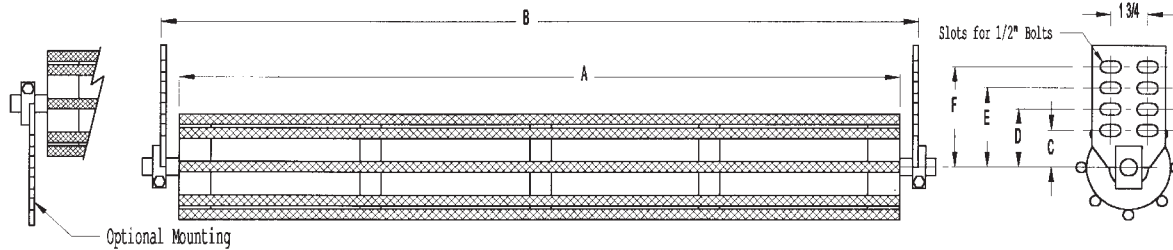


# Self-Cleaning Beater-Bar Rollers Return/Carrier

5" Dia. Rollers, Sealed for Life Bearings

Complete With Brackets/Pins

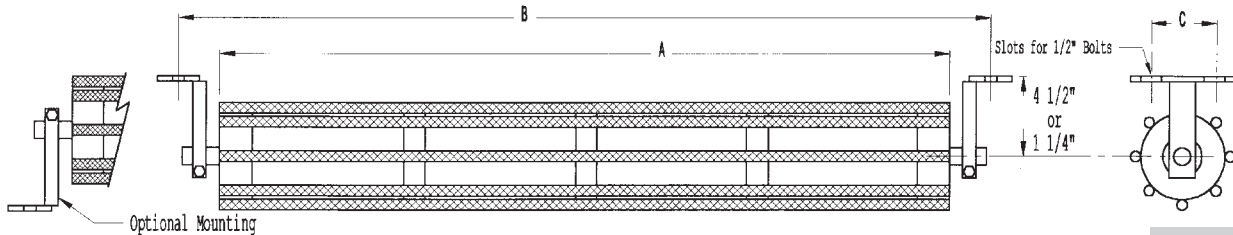
Inside Mount



Belt Width	Part Number	A	B	C	D	E	F	Rollers	Bracket	End Pins	Weight in lbs
18	MJ18SCR	22	24	1 3/4	2 3/4	3 3/4	4 3/4	SCR502200	RRB105	SS4582	18
24	MJ24SCR	28	30	1 3/4	2 3/4	3 3/4	4 3/4	SCR502800	RRB105	SS4582	21
30	MJ30SCR	34	36	1 3/4	2 3/4	3 3/4	4 3/4	SCR503400	RRB105	SS4582	23
36	MJ36SCR	40	42	1 3/4	2 3/4	3 3/4	4 3/4	SCR504000	RRB105	SS4582	26
42	MJ42SCR	46	48	1 3/4	2 3/4	3 3/4	4 3/4	SCR504600	RRB105	SS4582	29
48	MJ48SCR	52	54	1 3/4	2 3/4	3 3/4	4 3/4	SCR505200	RRB105	SS4582	32

Complete With Brackets/Pins

Bottom / Top Mount



4 1/2" Drop

Belt Width	Part Number	A	B	C	Bracket	Part Number	A	B	C	Bracket	Roller	End Pins	Weight in lbs
18	MJ18SCR-1-45	22	26 - 27	3	RRB103	MJ18SCR-2-45	22	26 - 27	4	RRB104	SCR502200	SS4582	19
24	MJ24SCR-1-45	28	32 - 33	3	RRB103	MJ24SCR-2-45	28	32 - 33	4	RRB104	SCR502800	SS4582	22
30	MJ30SCR-1-45	34	38 - 39	3	RRB103	MJ30SCR-2-45	34	38 - 39	4	RRB104	SCR503400	SS4582	24
36	MJ36SCR-1-45	40	44 - 45	3	RRB103	MJ36SCR-2-45	40	44 - 45	4	RRB104	SCR504000	SS4582	27
42	MJ42SCR-1-45	46	50 - 51	3	RRB103	MJ42SCR-2-45	46	50 - 51	4	RRB104	SCR504600	SS4582	30
48	MJ48SCR-1-45	52	56 - 57	3	RRB103	MJ48SCR-2-45	52	56 - 57	4	RRB104	SCR505200	SS4582	33

1 1/4" Drop

Belt Width	Part Number	A	B	C	Bracket	Part Number	A	B	C	Bracket	Roller	End Pins	Weight in lbs
18	MJ18SCR-1-15	22	26 - 27	3	RRB101	MJ18SCR-2-15	22	26 - 27	4	RRB102	SCR502200	SS4582	18
24	MJ24SCR-1-15	28	32 - 33	3	RRB101	MJ24SCR-2-15	28	32 - 33	4	RRB102	SCR502800	SS4582	21
30	MJ30SCR-1-15	34	38 - 39	3	RRB101	MJ30SCR-2-15	34	38 - 39	4	RRB102	SCR503400	SS4582	23
36	MJ36SCR-1-15	40	44 - 45	3	RRB101	MJ36SCR-2-15	40	44 - 45	4	RRB102	SCR504000	SS4582	26
42	MJ42SCR-1-15	46	50 - 51	3	RRB101	MJ42SCR-2-15	46	50 - 51	4	RRB102	SCR504600	SS4582	29
48	MJ48SCR-1-15	52	56 - 57	3	RRB101	MJ48SCR-2-15	52	56 - 57	4	RRB102	SCR505200	SS4582	32

Weights are approximate. Dimensions are in inches and subject to change without notice.